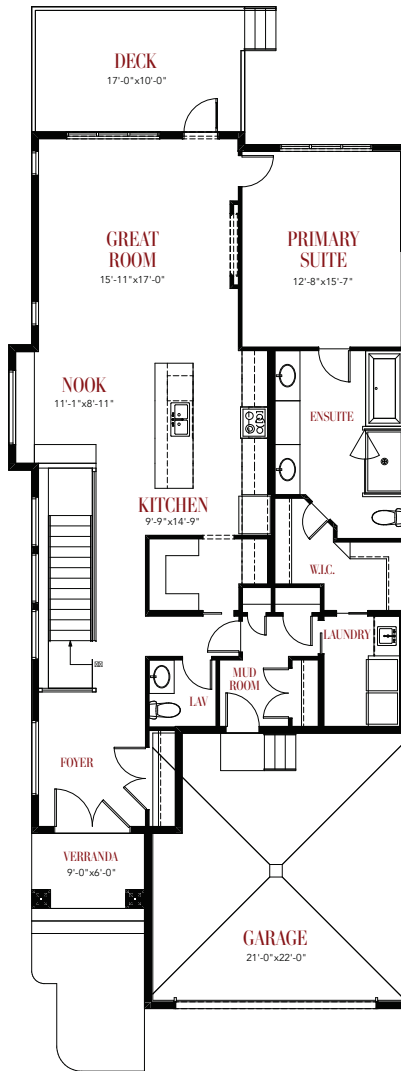
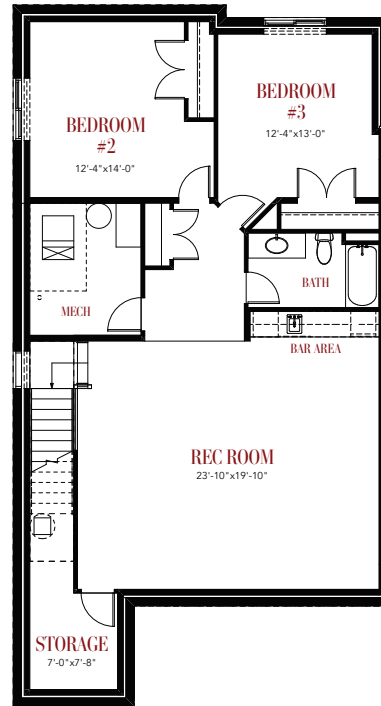


# THE SALISBURY VILLAS DESIGNER HOME

2,689 Sq. Ft | 3 Bedrooms | 2.5 Bathrooms



MAIN FLOOR  
1,541 Sq. Ft.



LOWER FLOOR  
1,148 Sq. Ft.



BUILDWITHKIMBERLEY.CA

780.809.5025

Kimberley Homes reserves the right to make changes to the floor plan, specifications and elevations. Dimensions are approximate and subject to change without notice.