

KIMBERLEY



CHÉROT

*Modern French Countryside
Living in St. Albert*

MODERN FRENCH LIVING

Chérot's community design is inspired by timeless European character and charm. From the architecture, entrance features, parks, playgrounds, trails, and more, living in Chérot will give you the sense of European living, right in the heart of St. Albert.

Rooted in French elegance, the beautiful community of Chérot features a brand new recreation centre, plenty of interconnected walking trails, nearby schools, and a playground inspired by Paris architecture – which will feature a bridge with locks, a 25 foot tall Eiffel Tower and modern lighting elements for year round play.



L'ARCHITECTURE

When you build in Chérot, you are able to build from one of the two incredibly beautiful architectural styles:

FRENCH FARMHOUSE

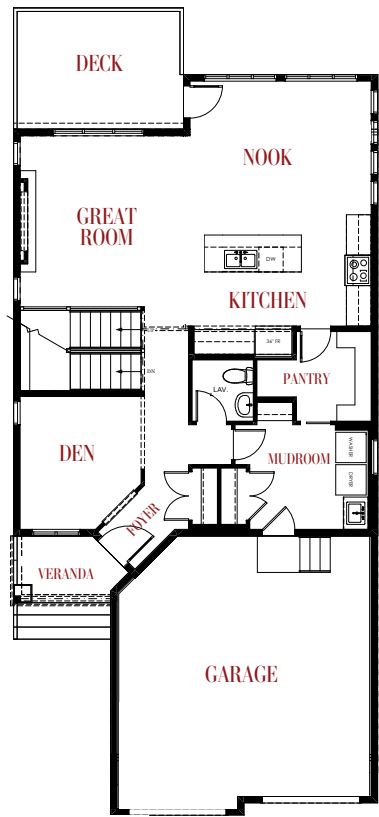
The French Farmhouse style is a traditional farmhouse style interpretation with elements of French country detailing including steep roof lines and rustic stone features. The French Farmhouse style allows for simplified forms with some traditional details while using modern building materials. A few defining features which truly make it stand out are steep and tall gables, tall linear style windows and rustic elements such as wood and stone.

FRENCH COUNTRY MODERN

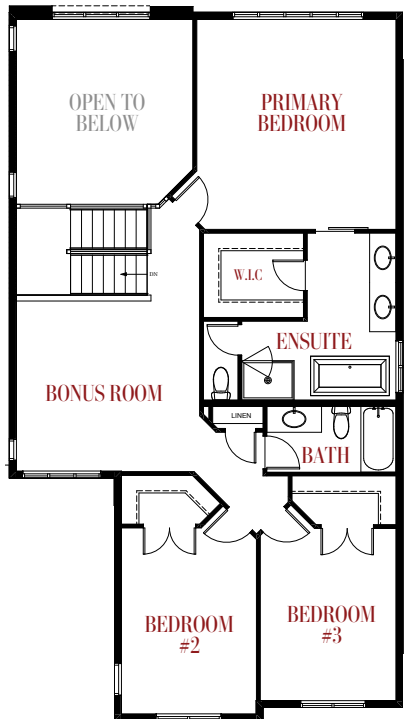
The French Country Modern style embodies beautiful and elegant building details with striking roof lines and massing that highlights open gables, traditional window arrangements, and rustic stone features. The French Country Modern style allows for traditional style elements to be interpreted through modern building materials.

DESIGNER HOME

6 CANNES COVE



MAIN FLOOR
1,089 Sq. Ft.

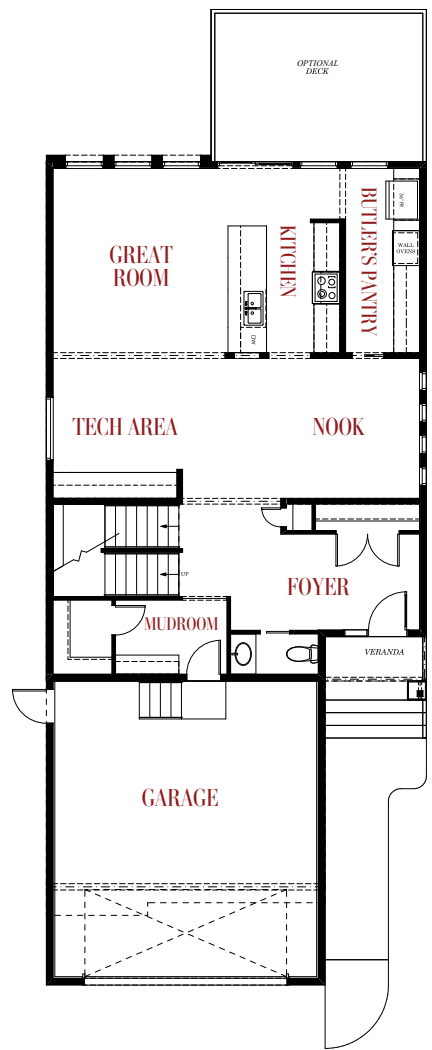
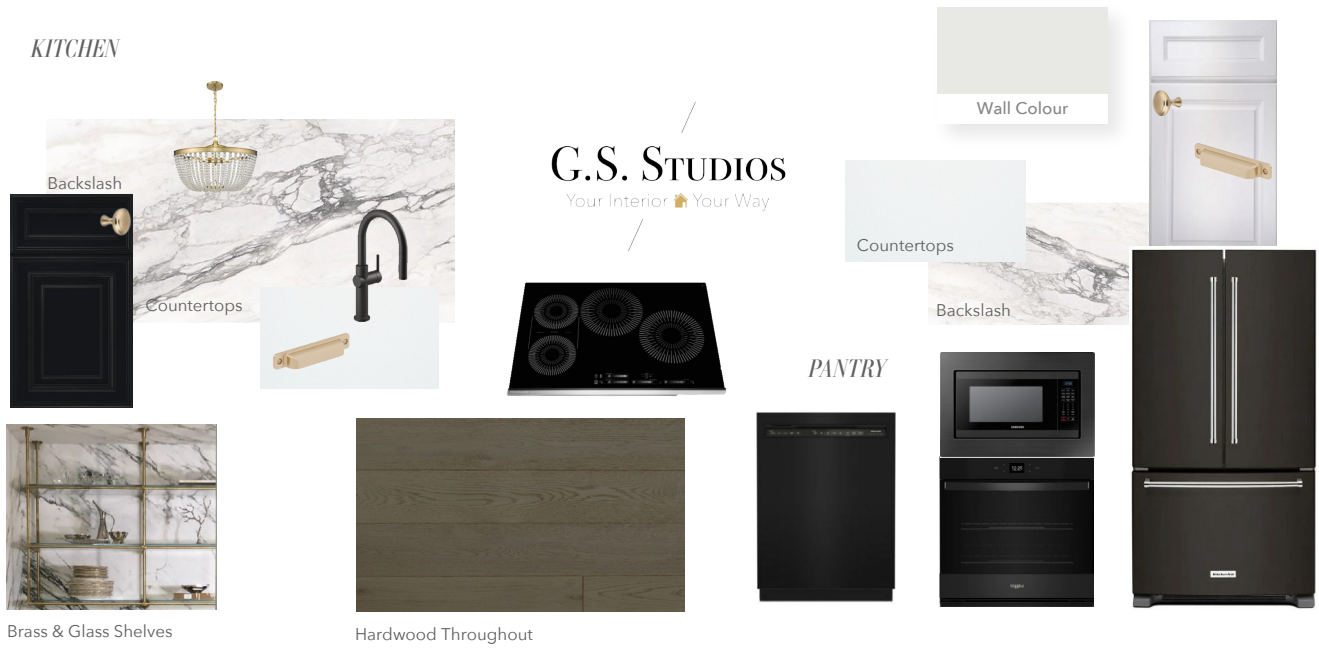


UPPER FLOOR
1,206 Sq. Ft.

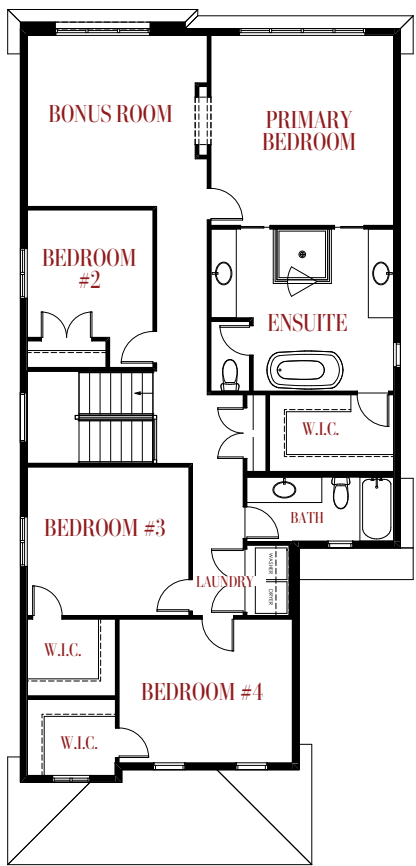


SHOWHOME

4 CANNES COVE

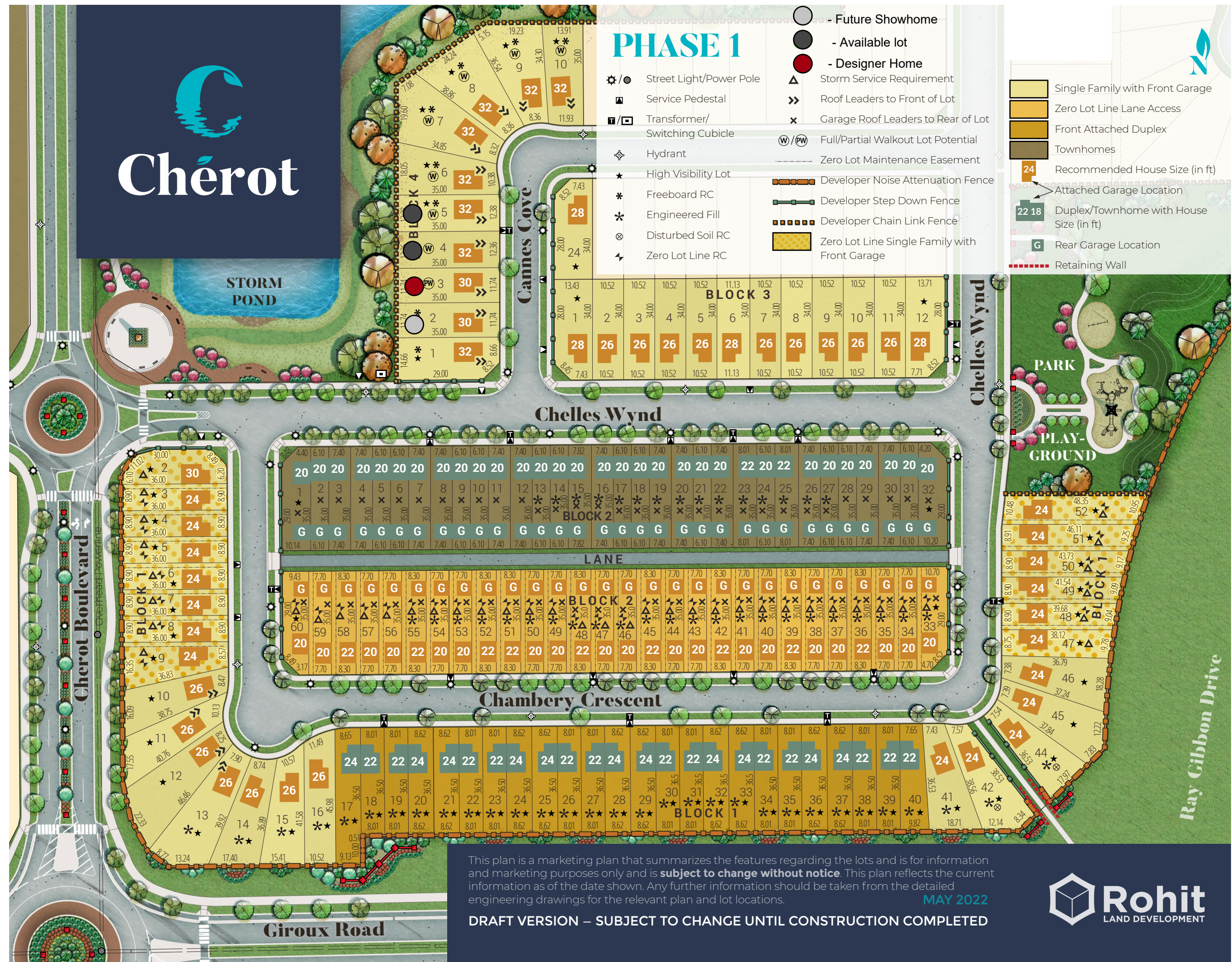


MAIN FLOOR
1,202 Sq. Ft.



UPPER FLOOR
1,550 Sq. Ft.

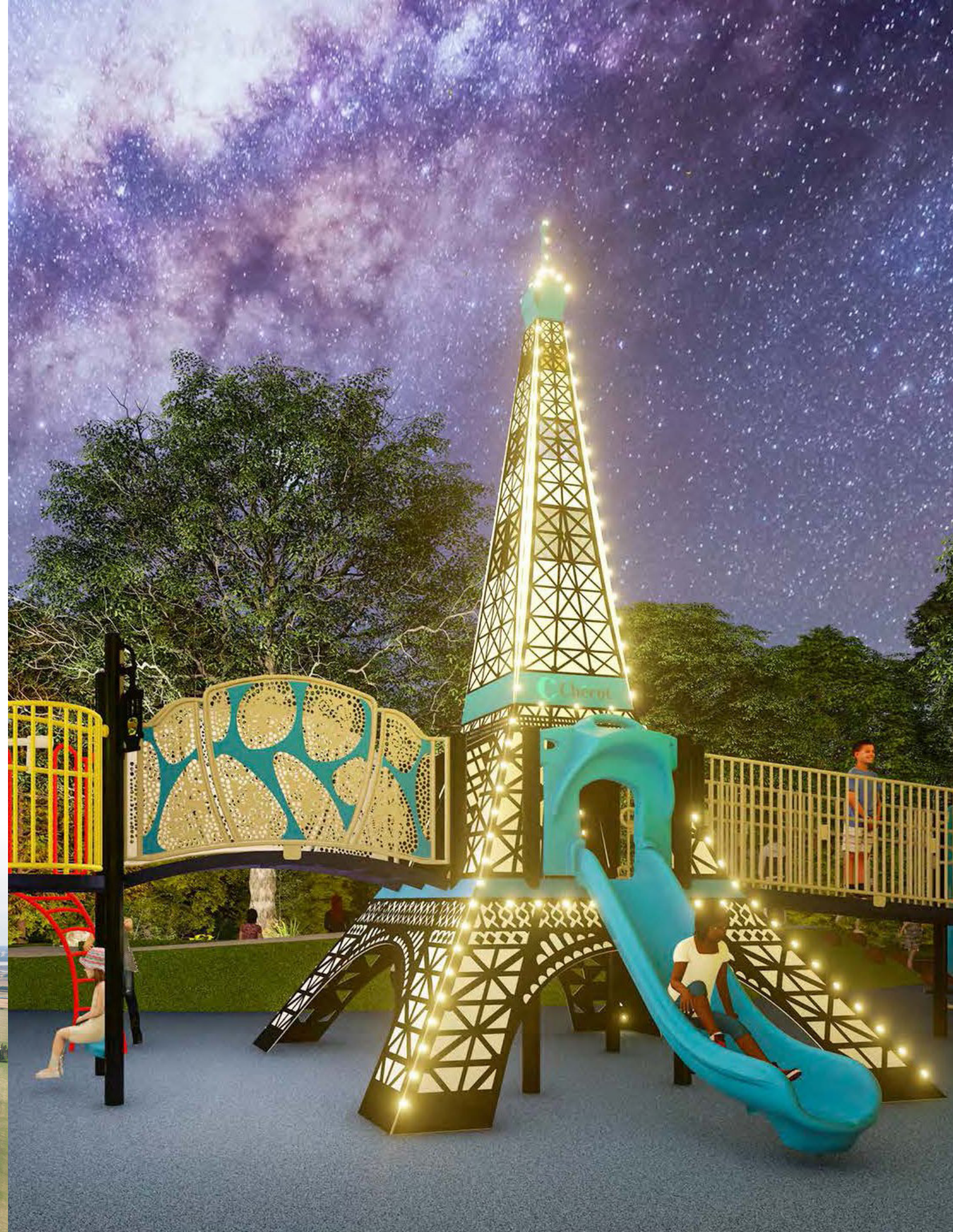
Cherot



KIMBERLEY HOMES IN CHÉROT

Kimberley Homes has long been synonymous with uncompromising quality, timeless elegance, and visionary design in the realm of home construction. Now, our renowned craftsmanship is developing in the beautiful new community of Chérot, where we are committed to creating semi-estate homes of unparalleled luxury and distinction.

- **Exclusively Crafting Semi-Estate Residences in Chérot:** We are dedicated to the art of creating semi-estate homes in the prestigious enclave of Chérot, offering only a select few the opportunity to indulge in true custom single-family residences featuring expansive 30-foot pockets.
- **Unsurpassed Amenity Lots:** Our commitment to excellence extends to selecting and crafting homes on the most coveted amenity lots within the community, ensuring a lifestyle that exudes exclusivity.
- **Luxury and Uncompromising Quality as the Baseline:** When you build with Kimberley in Chérot, luxury isn't an upgrade; it's the very foundation upon which we build. Expect nothing less than the epitome of visible quality as the standard for every home we create.
- **Expansive Estate-Style Lots:** Our vision for opulent living extends to offering the largest lots in the entire community, providing you with the grandeur and spaciousness you deserve.
- **Scenic Oasis Backing onto 8 Pristine Ponds:** Every one of our meticulously designed homes enjoys a picturesque backdrop, as they are exclusively situated on lots that gracefully border eight serene ponds, each a tranquil haven of natural beauty and elegance. For the discerning few, we present four premium west-facing, walkout lot opportunities.
- **Effortless Accessibility:** Your luxurious retreat at Chérot Estates is perfectly situated with swift access to both Ray Gibbons Drive and the Anthony Henday, ensuring that your connection to the city is seamless and expedient.
- **Future-Forward Living:** As a resident of Chérot Estates, you'll be in proximity to the forthcoming Recreation Centre in St. Albert, offering you not only a lavish home but also a lifestyle that anticipates and embraces the future of upscale living.





BUILDWITHKIMBERLEY.CA
(780) 809-5025

