

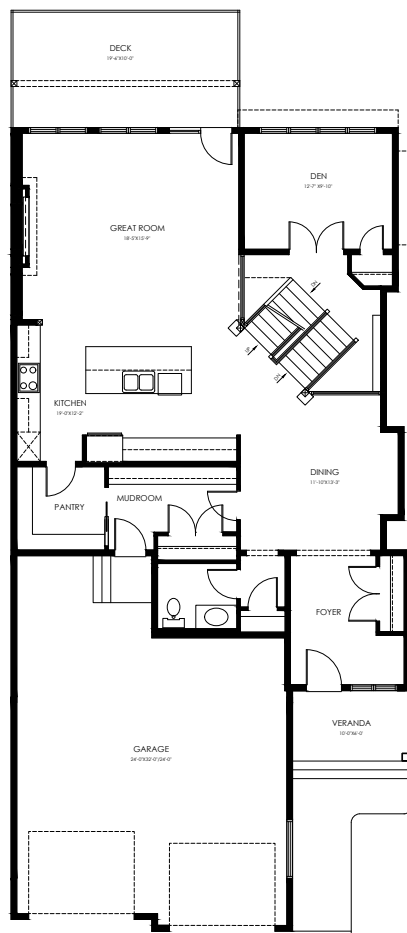
76 RYBURY COURT

2929 SQFT – 3 BEDROOMS

A KIMBERLEY SIGNATURE

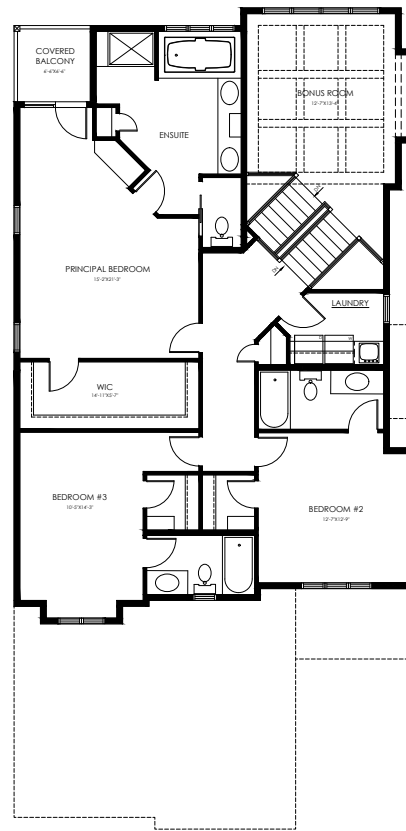
The New Hampshire is anchored by a show stopping central staircase, with a dropped Den and raised Bonus Room with 10' ceilings that play off a traditional split level. Each Bedroom has its own Ensuite and Walk-in Closet.

The Principal Bedroom features upgrades like a coffee bar and a private, covered balcony. Built on a walkout lot in the final phase of Salisbury Village.



MAIN FLOOR

1397 sqft



UPPER FLOOR

1532 sqft



30 YEARS OF EXCELLENCE

WWW.BUILDWITHKIMBERLEY.CA

Questions? Call or text us!
780.809.5025