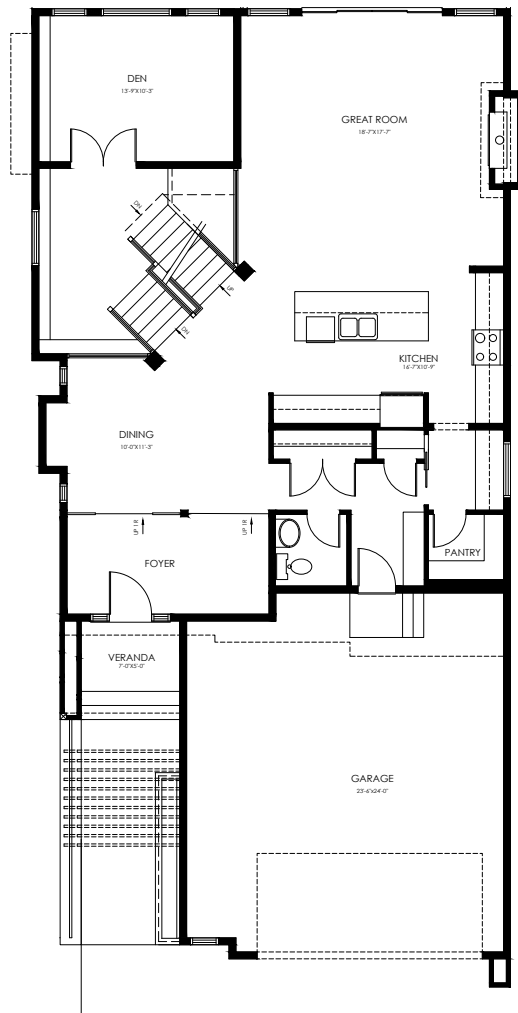


# NEW HAMPSHIRE 32

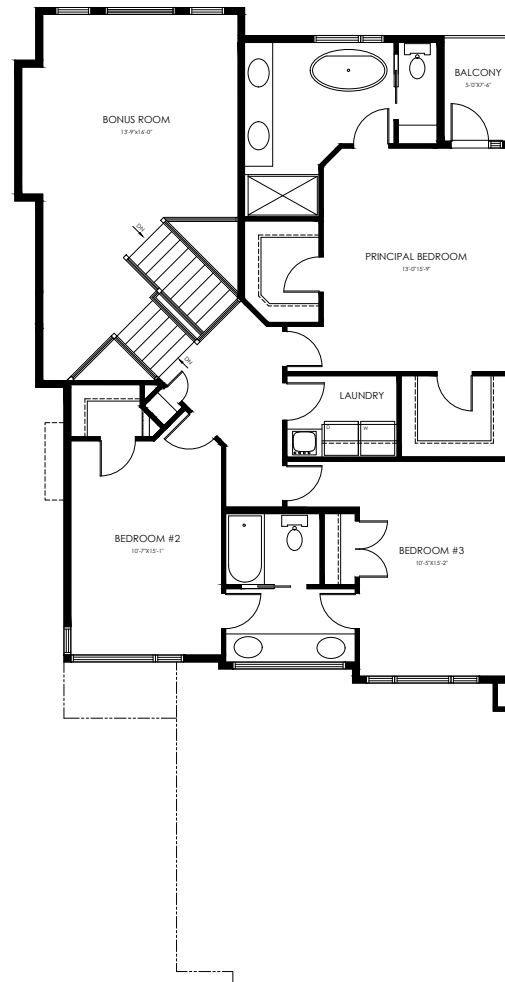
2850 SQFT – 3 BEDROOMS

## A KIMBERLEY SIGNATURE

The New Hampshire is anchored by a show-stopping central staircase, with a dropped Den and raised Bonus Room with 10' ceilings that play off a traditional split level.



MAIN FLOOR  
1417 sqft



UPPER FLOOR  
1433 sqft



WWW.BUILDWITHKIMBERLEY.CA  
Edmonton's SEVEN TIME Builder of the Year

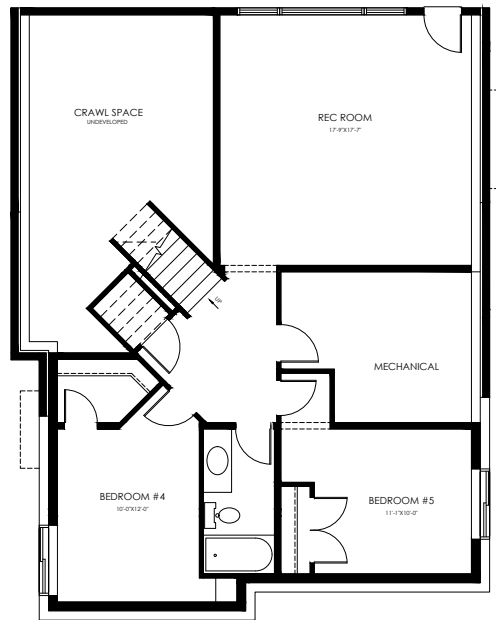
Need to make adjustments so it's just right? We can personalize this plan!

# NEW HAMPSHIRE 32

2850 SQFT – 3 BEDROOMS

## A KIMBERLEY SIGNATURE

The New Hampshire is anchored by a show-stopping central staircase, with a dropped Den and raised Bonus Room with 10' ceilings that play off a traditional split level.



BASEMENT

870 sqft



[WWW.BUILDWITHKIMBERLEY.CA](http://WWW.BUILDWITHKIMBERLEY.CA)  
Edmonton's SEVEN TIME Builder of the Year

Need to make adjustments  
so it's just right? We can  
personalize this plan!