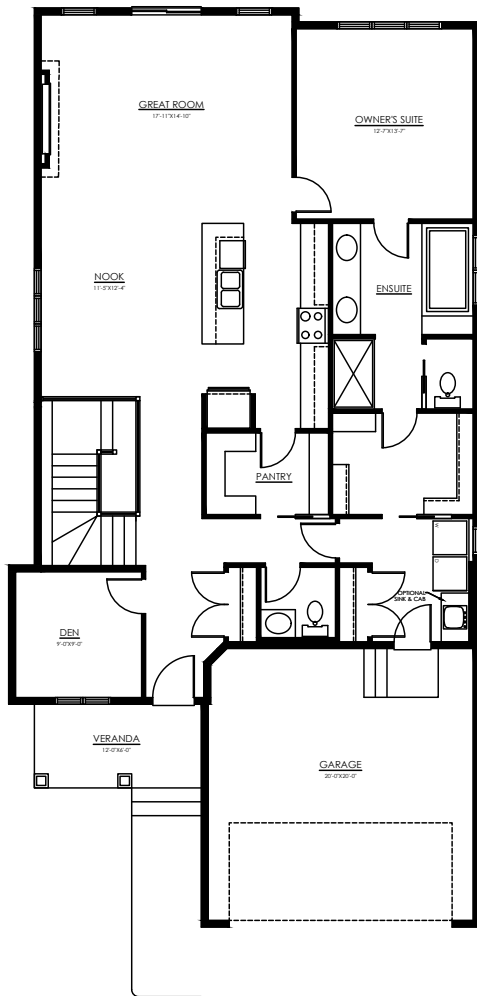


# PRESTON 32

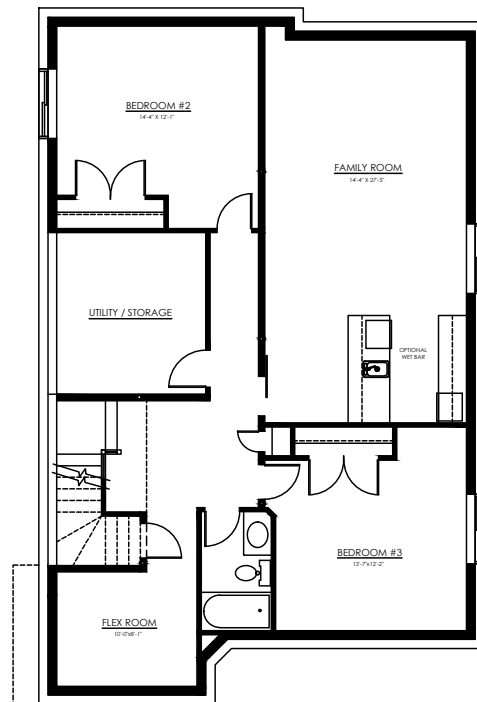
1529 SQFT – 1 BEDROOM

## PEACE OF MIND

The Preston's popularity as a duplex translates effortlessly into a smart family bungalow; with all your living needs on one floor, there is less time spent trekking up and down the stairs.



MAIN FLOOR  
1529 sqft



OPTIONAL BASEMENT  
DEVELOPMENT  
1210 sqft



WWW.BUILDWITHKIMBERLEY.CA  
Edmonton's SEVEN TIME Builder of the Year

Need to make adjustments  
so it's just right? We can  
personalize this plan!